



Kem C. Gardner  
**POLICY INSTITUTE**  
THE UNIVERSITY OF UTAH

DAVID ECCLES SCHOOL OF BUSINESS

# Utah's Shifting Demographic Landscape: A View into the Future

*March 15, 2022*

INFORMED DECISIONS™

---

Kem C. Gardner Policy Institute | 411 East South Temple Street, Salt Lake City, Utah 84111 | 801-585-5618 | [gardner.utah.edu](http://gardner.utah.edu)

# Kem C. Gardner Policy Institute

David Eccles School of Business

Economics and Public Policy

Demographics

Survey Research

## Utah's Mental Health System

A collaborative endeavor of the Kem C. Gardner Policy Institute  
and the Utah Hospital Association

Laura Summers, Senior Health Care Analyst  
Dianne Meppen, Director of Survey Research  
Samantha Ball, Research Associate

Final Report  
August 2019



Economics and Public Policy

Demographics

Survey Research

About



## Blog: First ever Race/Ethnicity Projections for Utah Reveal that Utah will Continue to Diversify

By: Pamela Perlich

Today we are publishing Utah's first ever **state-level race and ethnicity population projections**. We project single year of age and sex for 2016 to 2065 for seven population groups: six non-Hispanic racial groups and Hispanics. These new projections provide a more detailed view of the future that can potentially inform a wide range of policy planning and evaluation applications. This work builds on **2017 baseline Utah projections**

## INFORMED DECISIONS | 2018

Election Brief

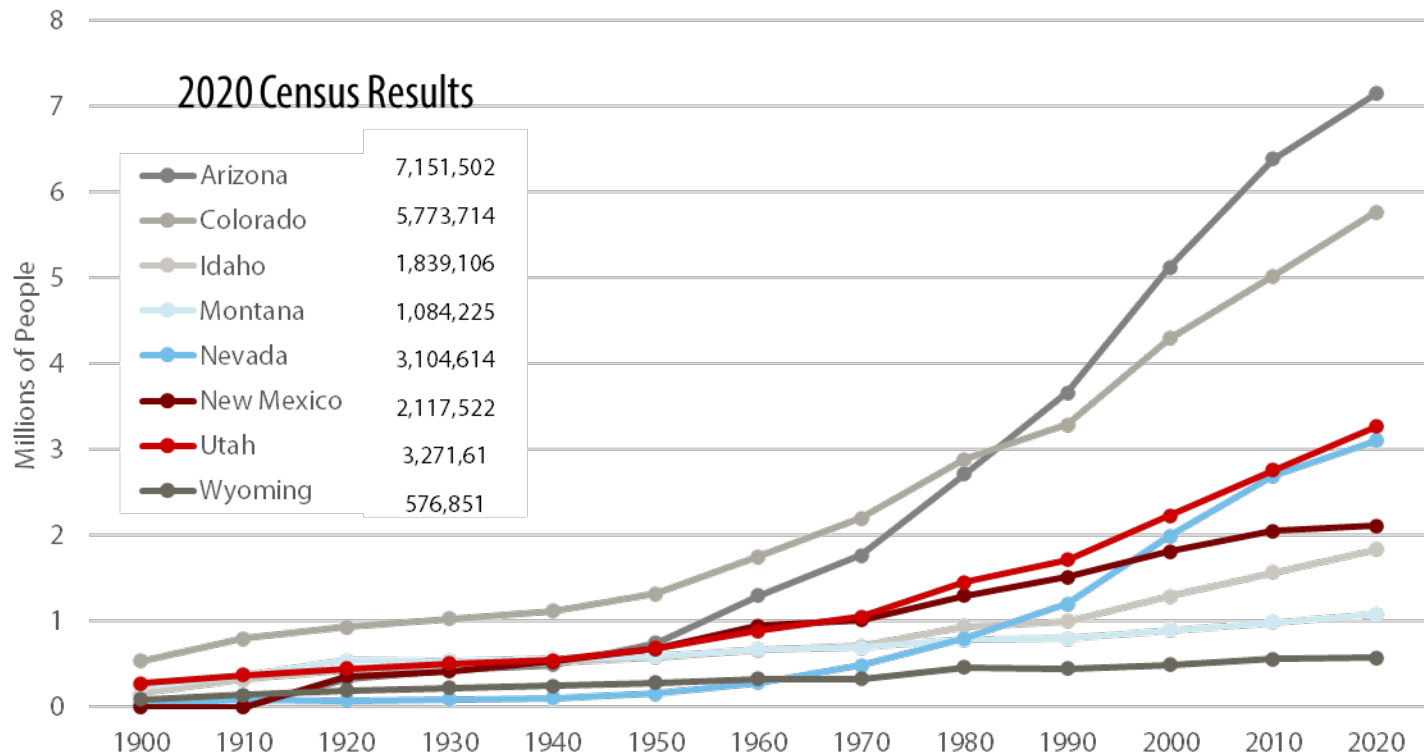


# This presentation in a nutshell:

- A growing and changing population is a long-standing constant in Utah that is not projected to change
- Urban counties are home to most Utahns and core to continued statewide growth
- Changing demographic characteristics are projected to create impacts on how Utah grows
- Utahns are becoming more racially and ethnically diverse and projected to continue to diversify into the future

# Looking back

# Long-term growth in the Intermountain Region

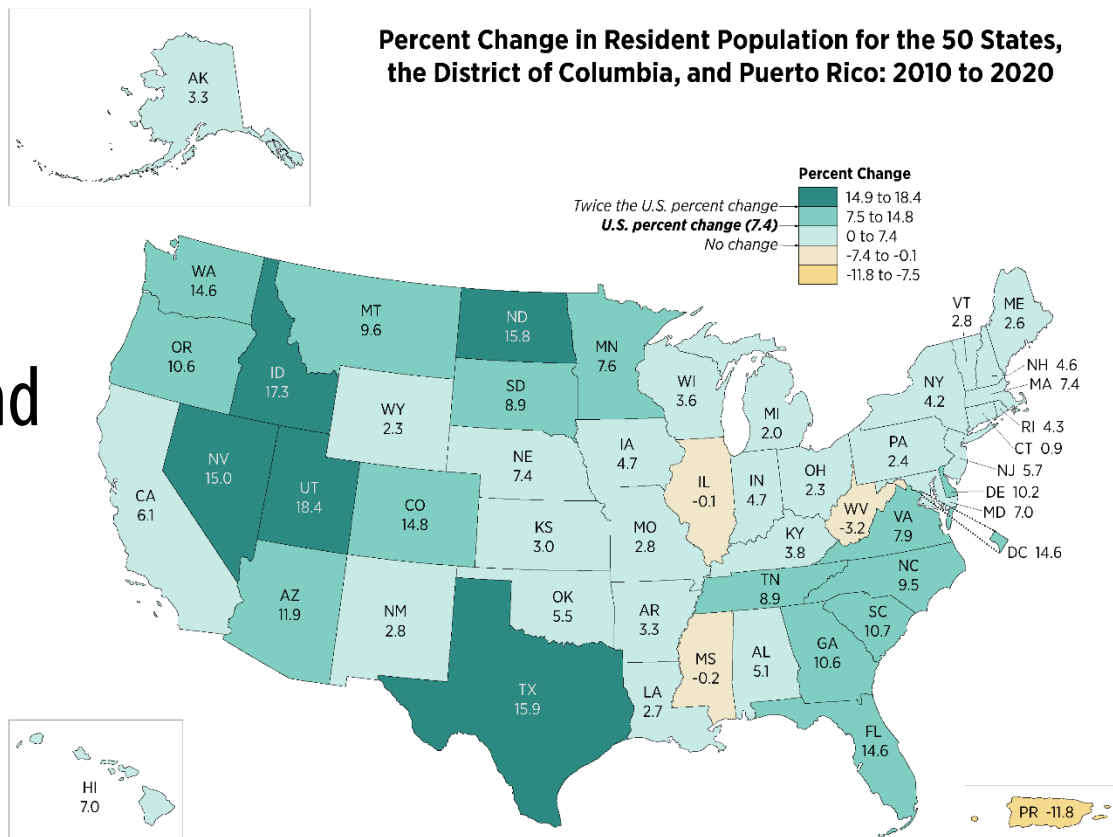


Source: U.S. Census Bureau Decennial Census

All states in the Intermountain West grew between 2010 and 2020.

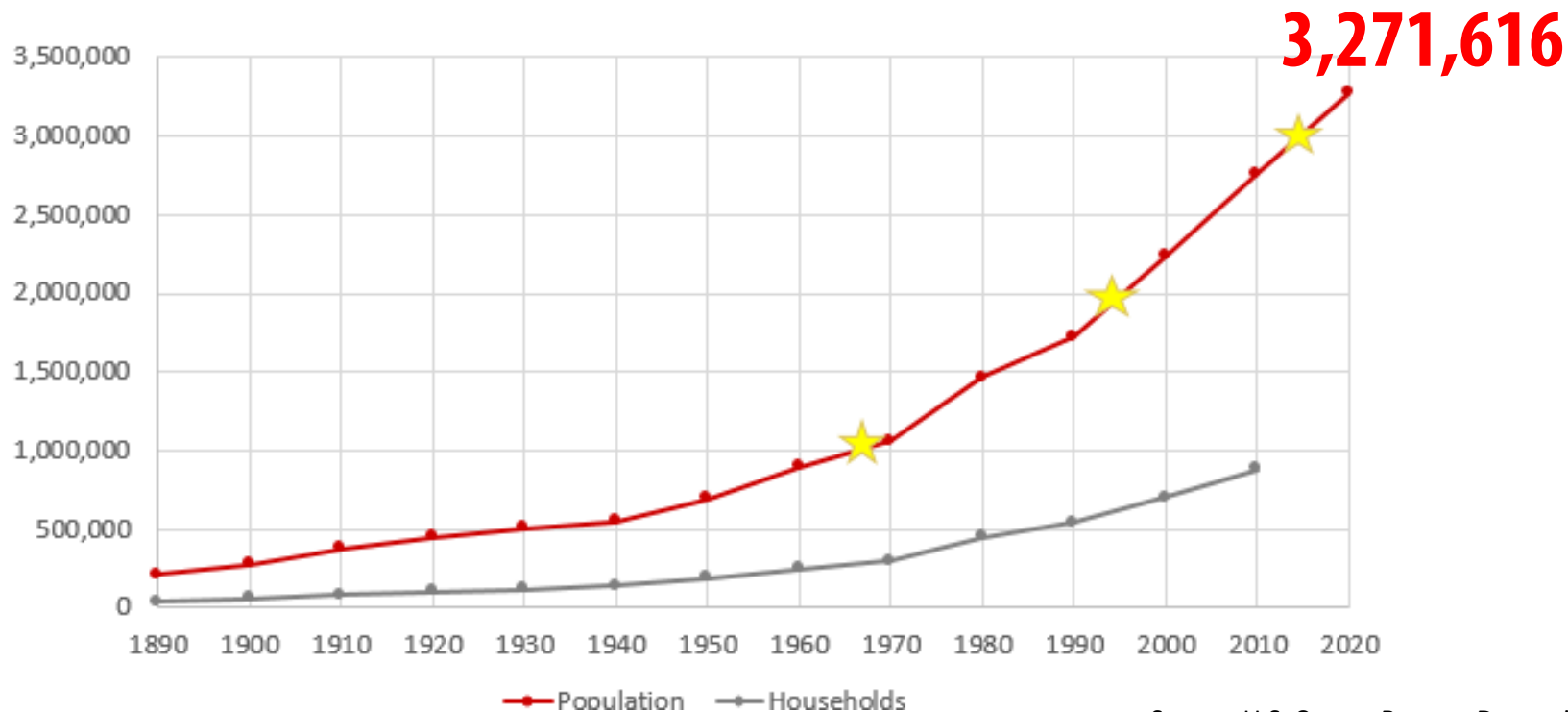
3 of 5 fastest growing states

Percent Change in Resident Population for the 50 States, the District of Columbia, and Puerto Rico: 2010 to 2020



# Growth of Population and Households in Utah

1890-2020

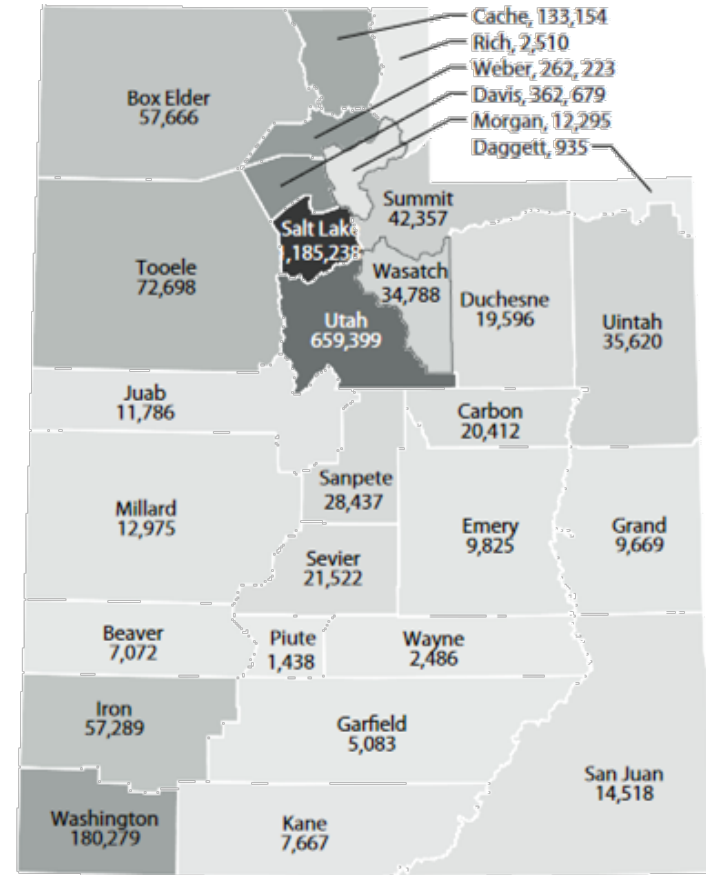


Source: U.S. Census Bureau, Decennial Census

The Wasatch Front is home to  
75% of Utahns

another 10% live in Cache and  
Washington counties

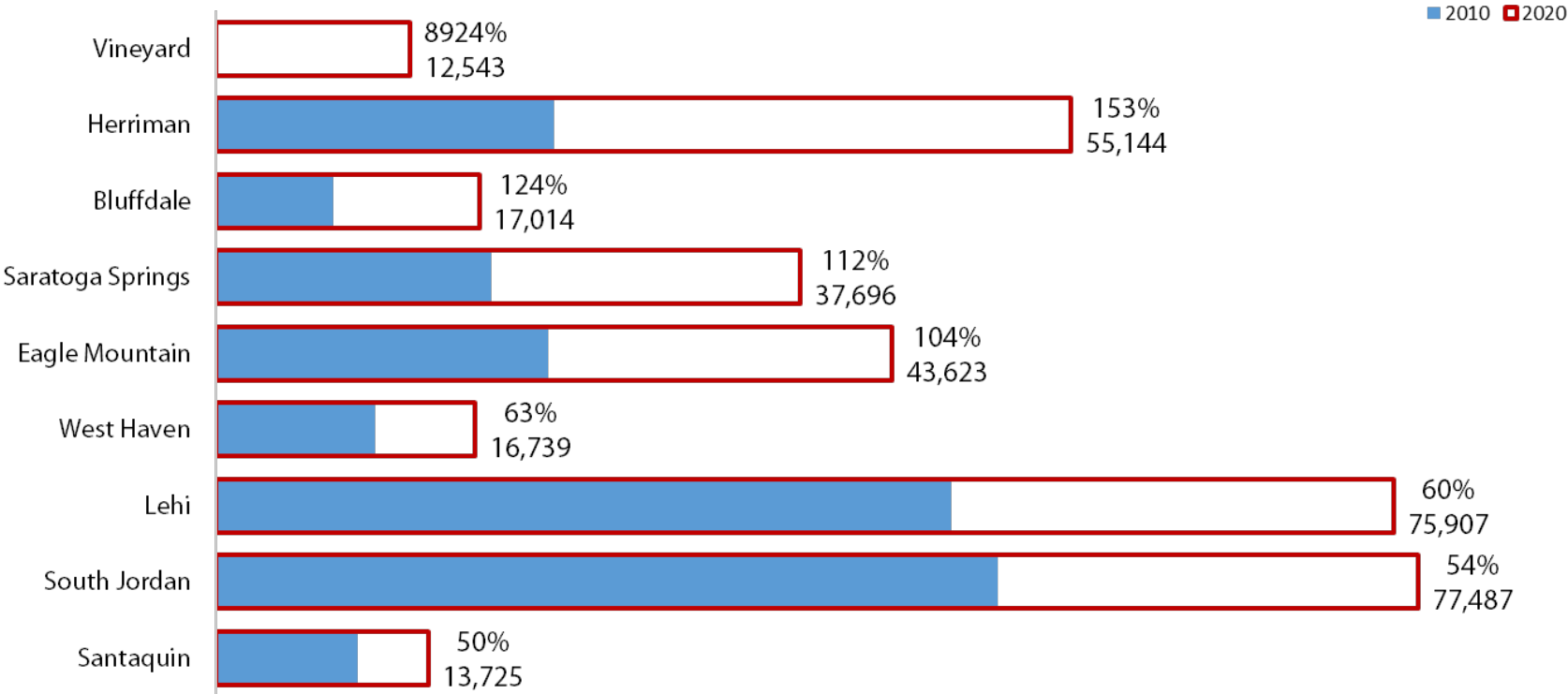
*2020 Census Population by County*



Source: U.S. Census Bureau



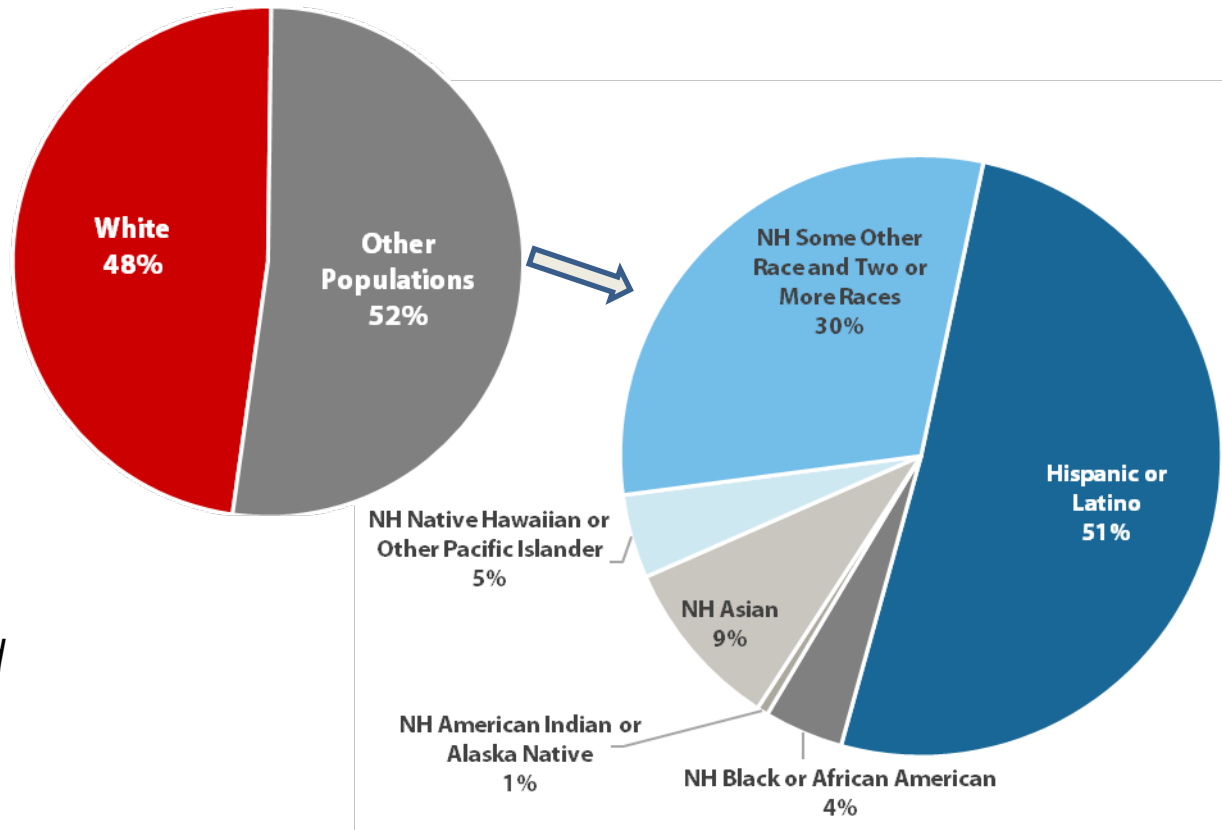
# The fastest growing cities in Utah between 2010 and 2020 were largely in northern Utah County and southern Salt Lake County



Source: U.S. Census Bureau

Racial and ethnic diversity in Utah has played a critical role in population growth this decade

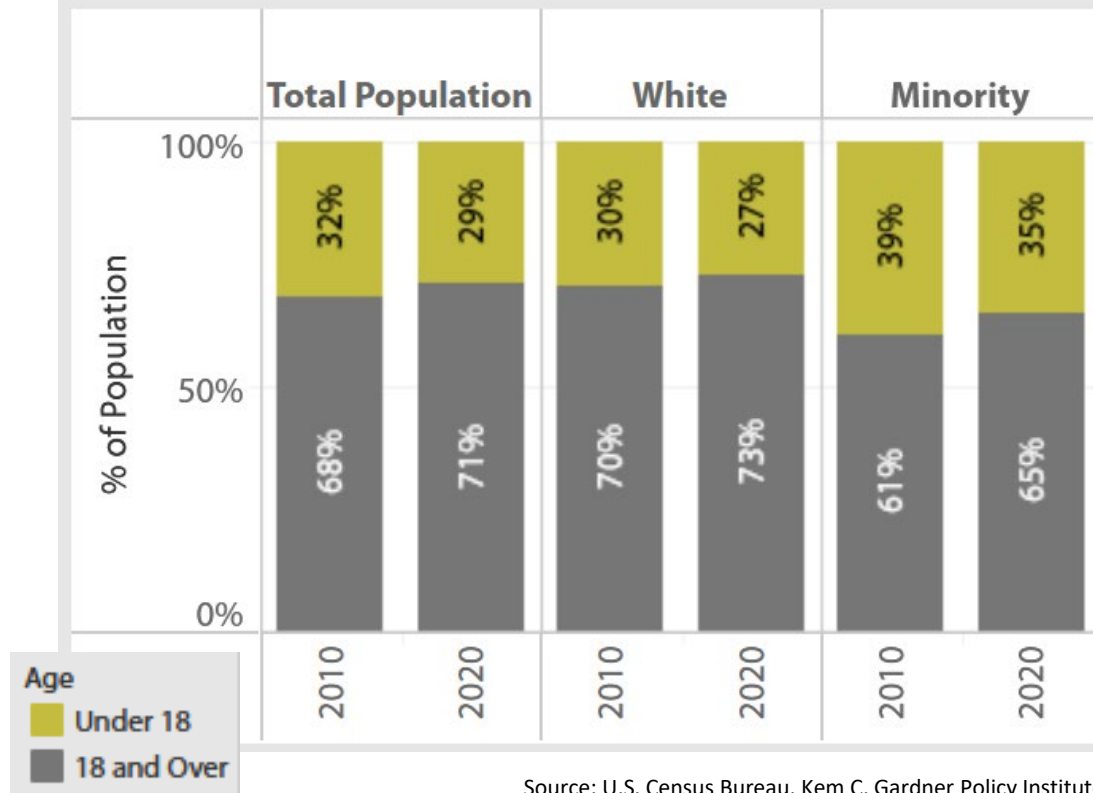
*Contributions to growth by racial and ethnic populations, 2010 to 2020*



Source: U.S. Census Bureau, Redistricting Data Files (2010 and 2020)

Younger Utahns are more racially and ethnically diverse than older residents

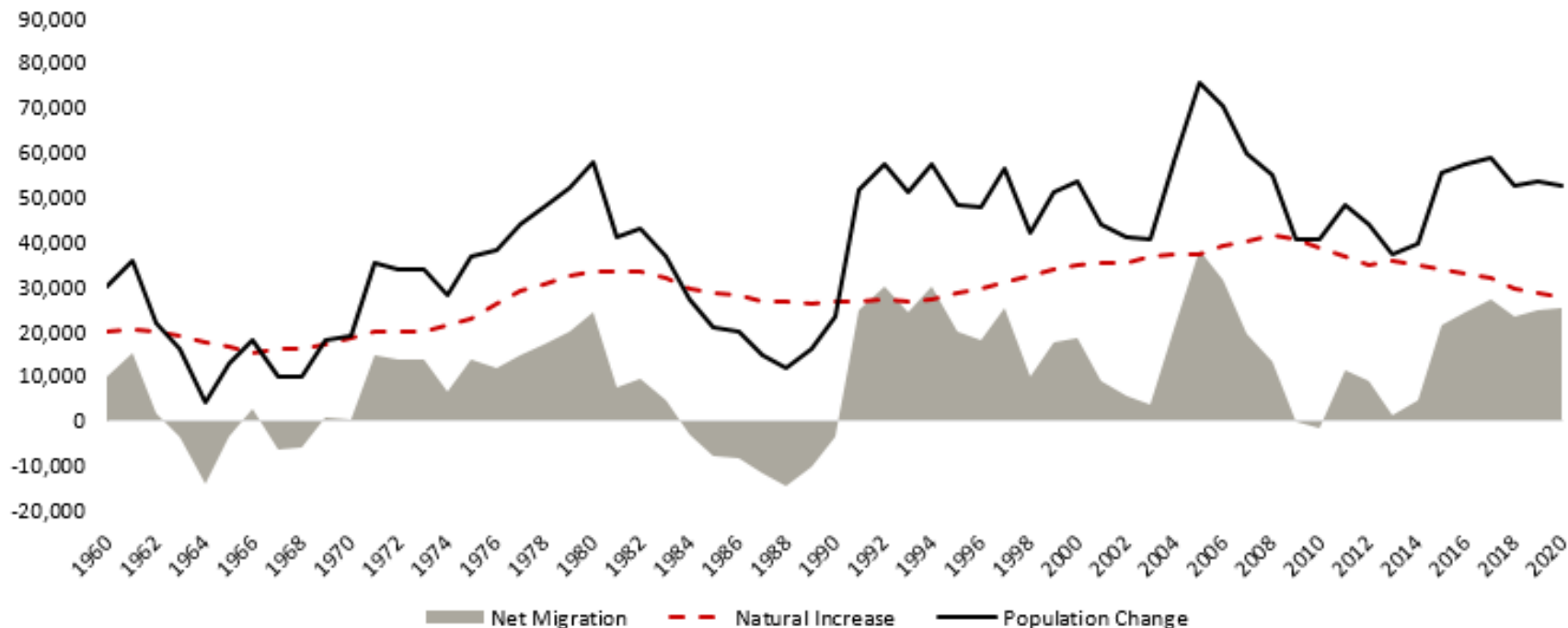
## State of Utah: Share of Population Under 18 years and 18 years and over: Total, White, and Minority



Source: U.S. Census Bureau, Kem C. Gardner Policy Institute

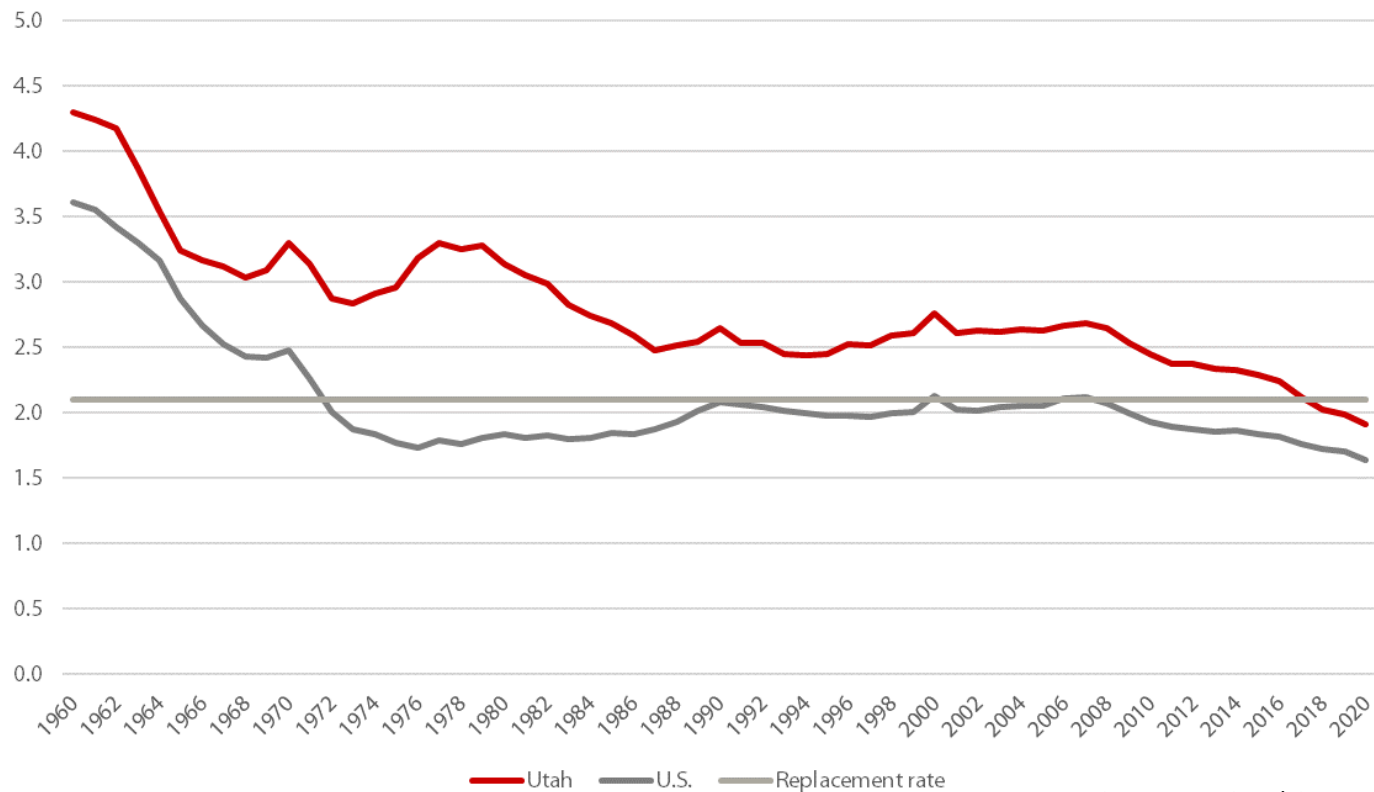
# Drivers of Utah's growth

# Migration has become a more consistent component of change



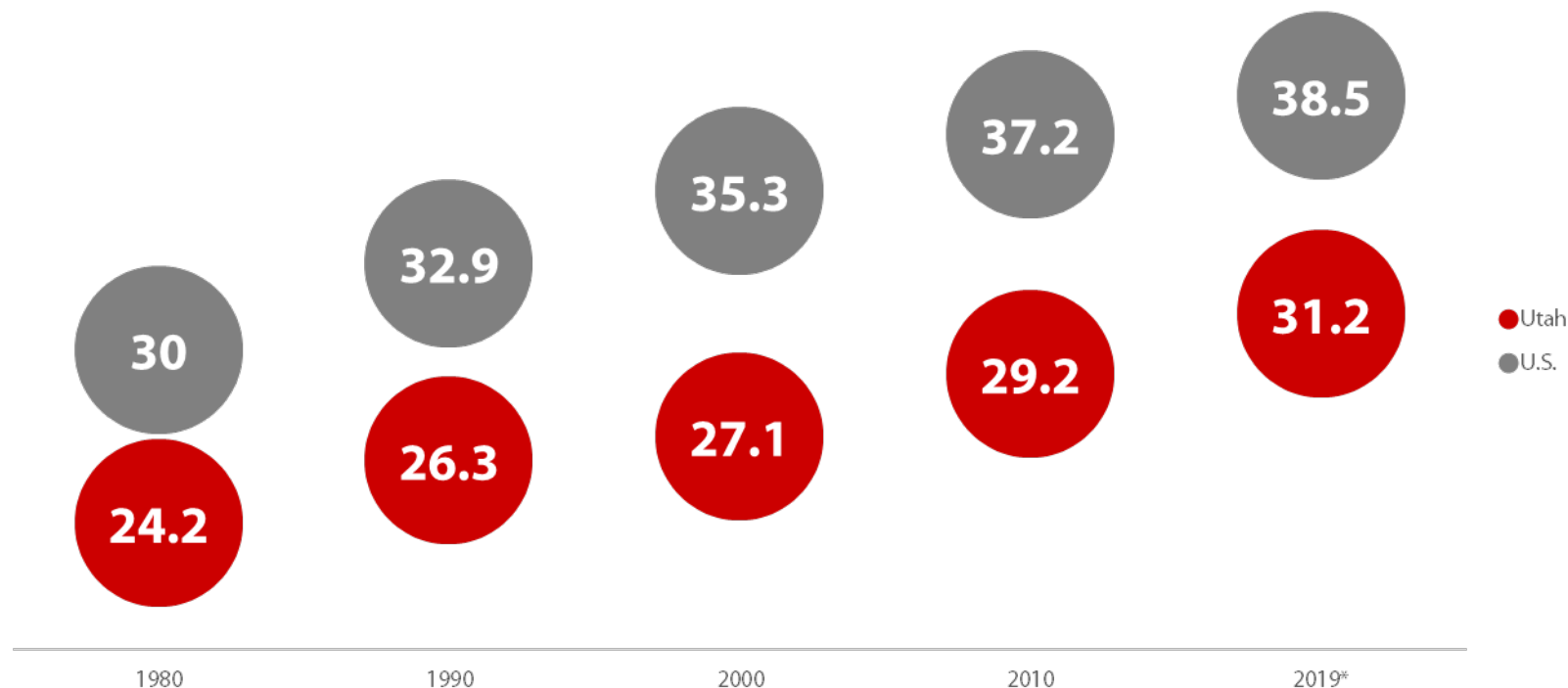
Source: Utah Population Estimates Committee and Utah Population Committee

# Total fertility rate has been declining for the past century, amplified since 2008



Source: National Center for Health Statistics

# Like the nation, Utah's population is aging



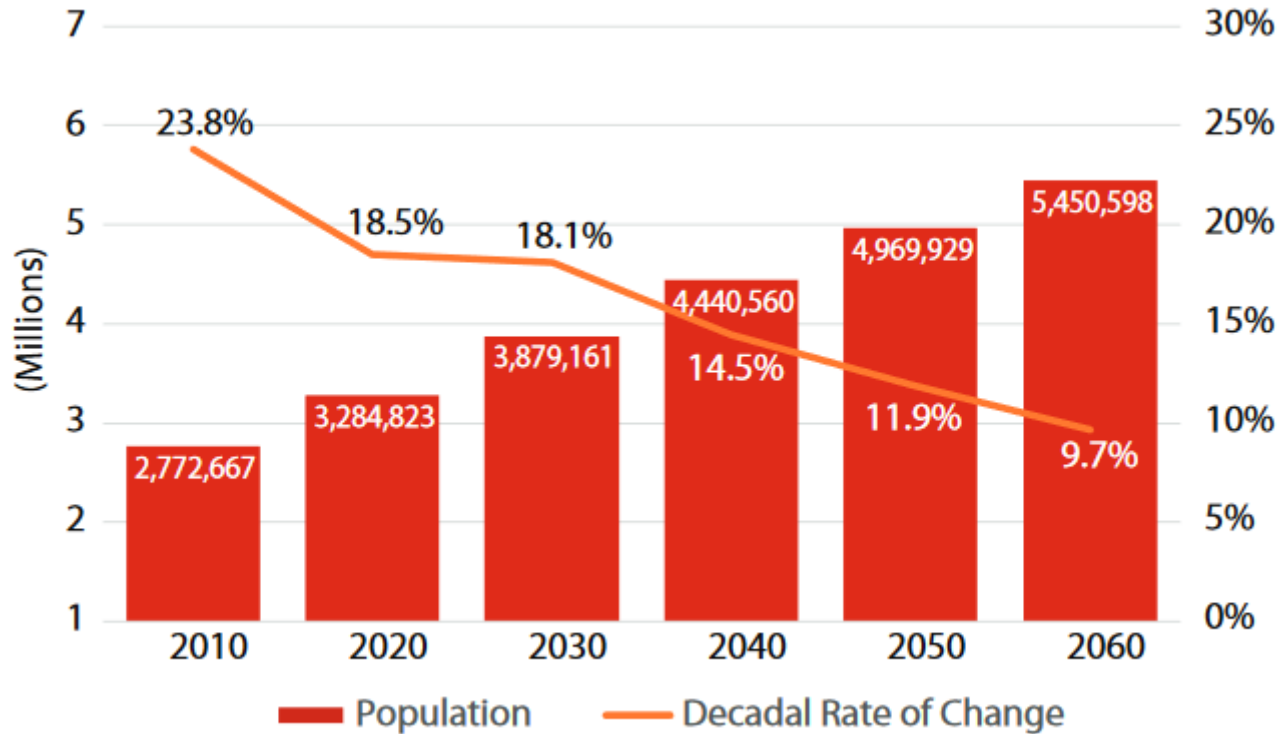
Source: U.S. Census Bureau, Decennial Census and 2019 1-Year American Community Survey Estimate

# Looking forward



# Growth in Utah is projected to continue, but moderate over time

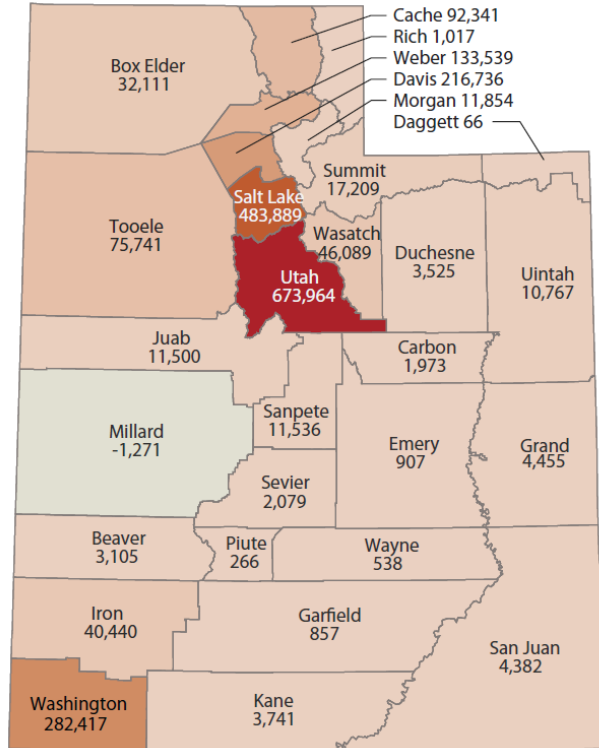
*A projected increase of 1.3 million Utahns*



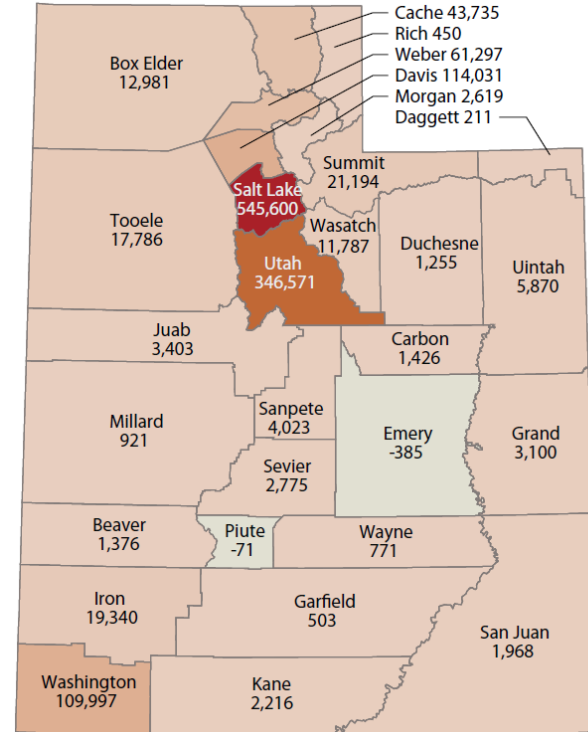
Source: Kem C. Gardner Policy Institute

# Population and employment growth is more urbanized

*Utah Projected County Population Change, 2020 to 2060*



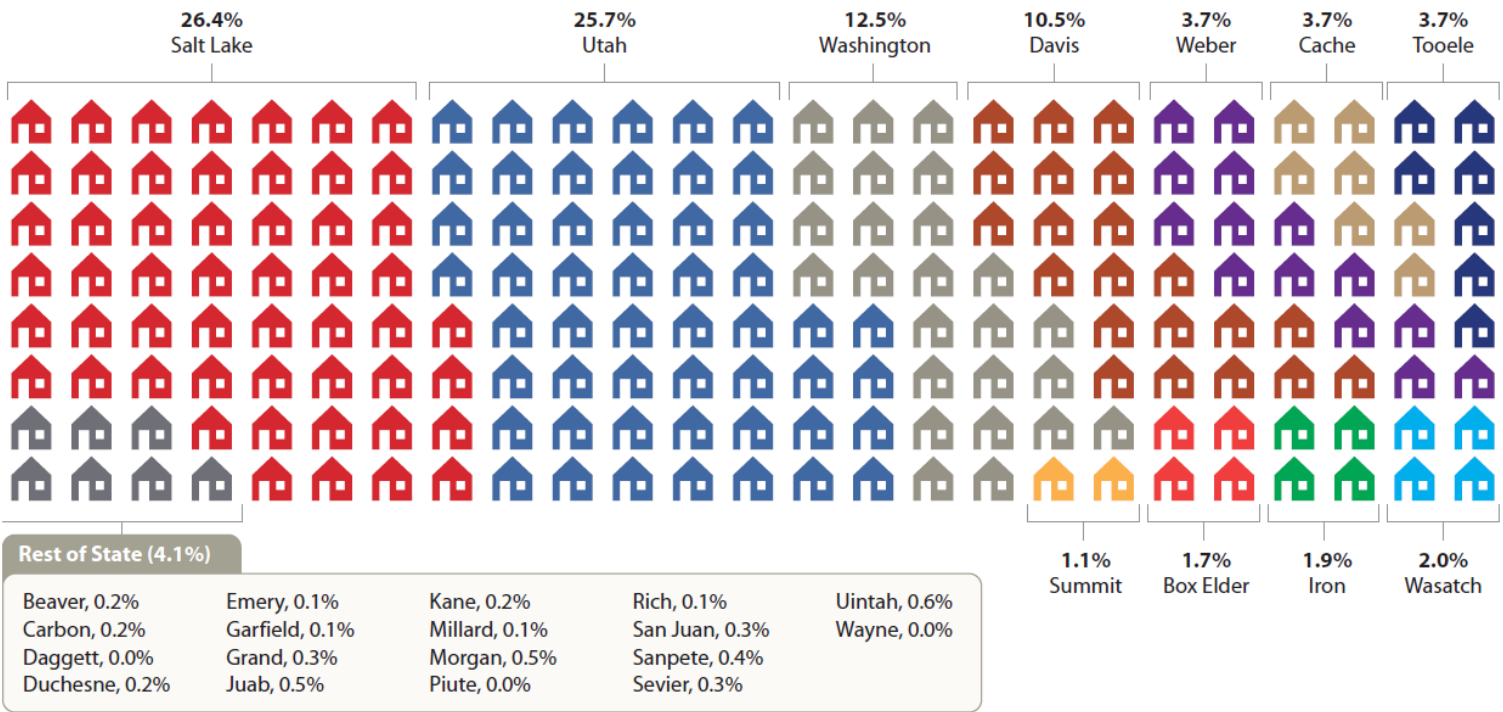
*Projected Job Growth by County, 2020 to 2060*



Source: Kem C. Gardner Policy Institute, 2020-2060 Projections

# Demographic Changes Impact Household Growth

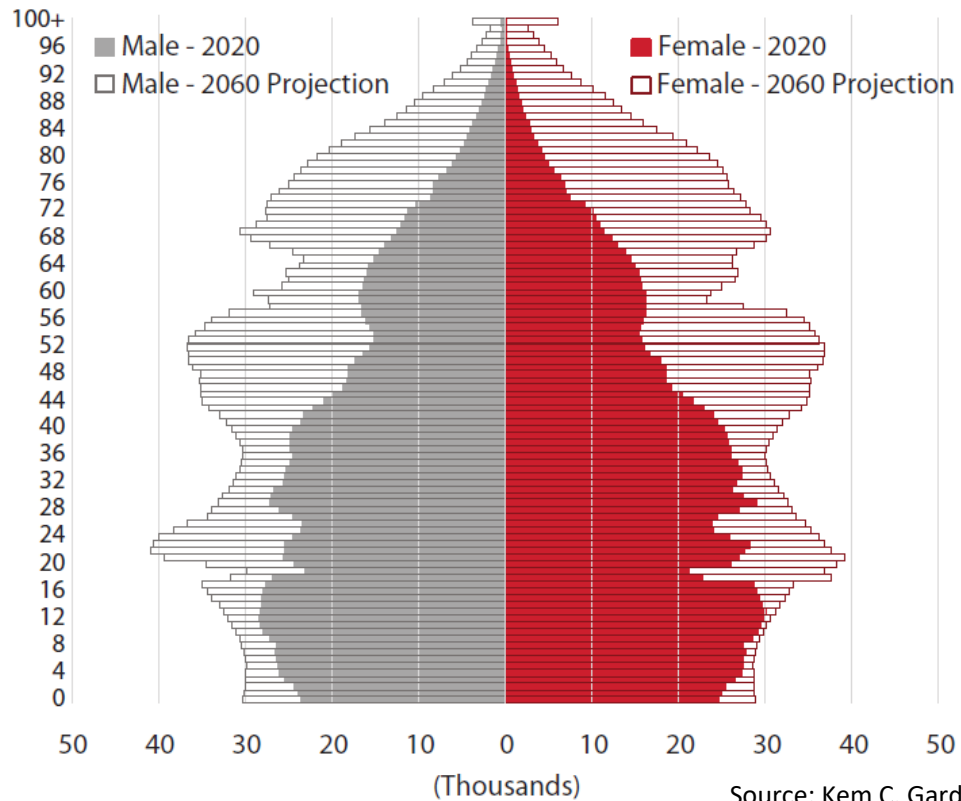
County Share of Projected State Household Growth, 2020-2060



Source: Kem C. Gardner Policy Institute, 2020-2060 Projections

# Changes to age structure are projected to continue

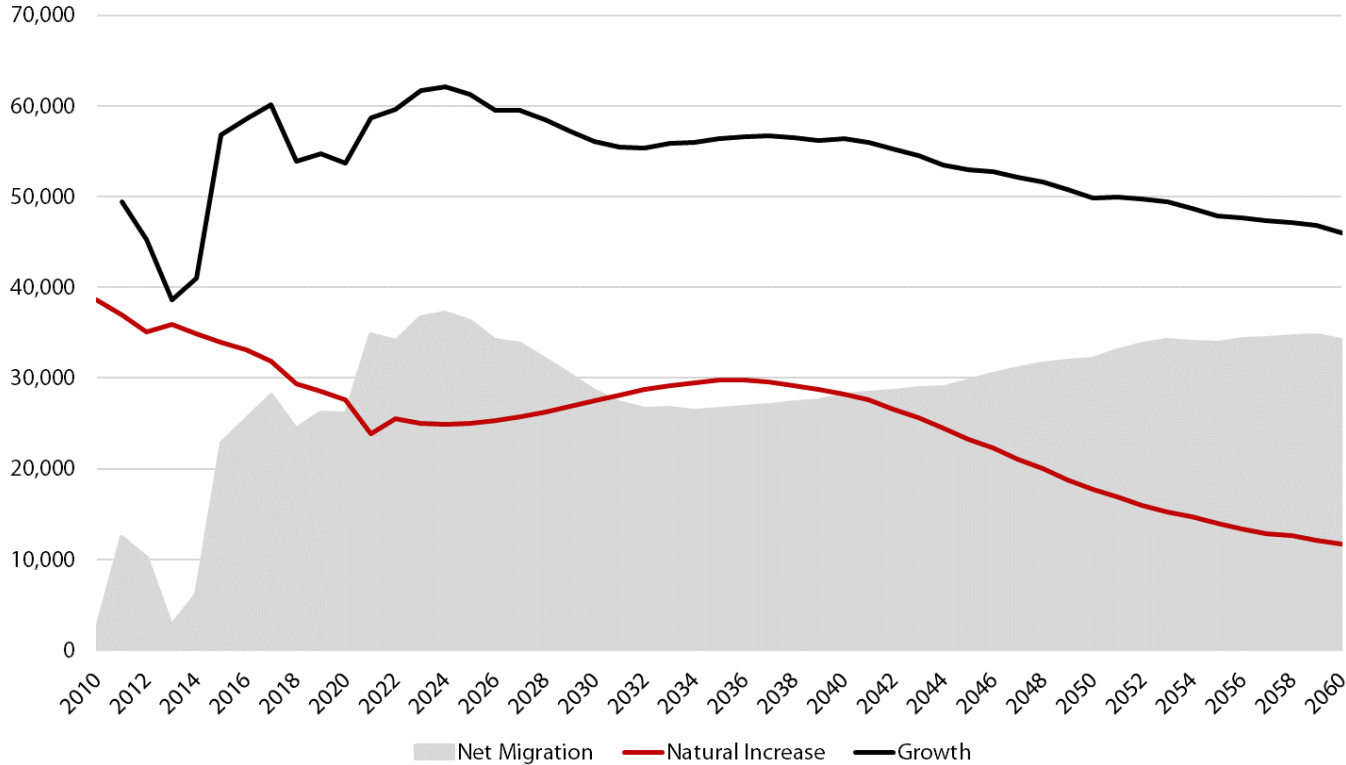
*Utah Population Pyramid, 2020 and 2060*



Source: Kem C. Gardner Policy Institute, 2020-2060 Projections

# Net migration becomes a more dominant driver of statewide population change

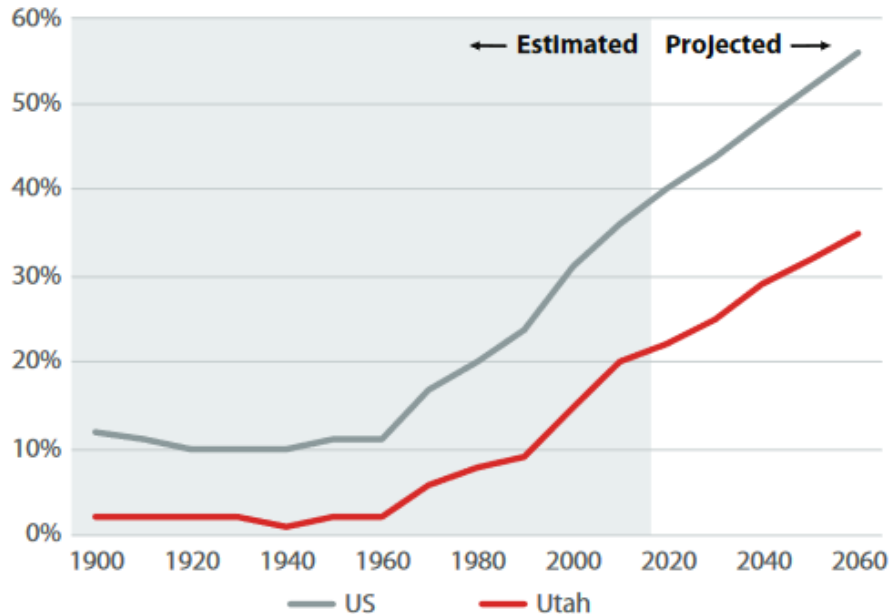
*Projected Utah Components of Change, 2010-2060*



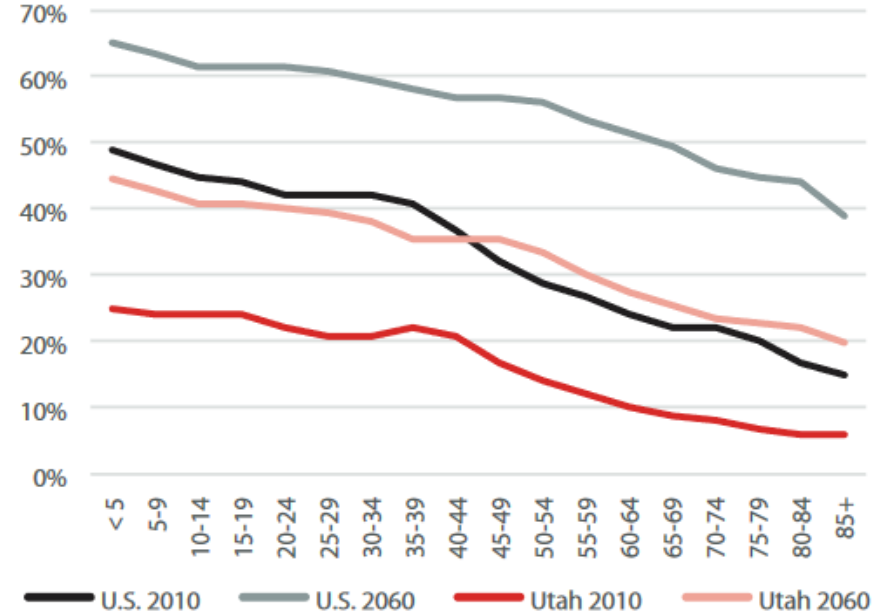
Source: Kem C. Gardner Policy Institute, 2020-2060 Projections

# Racial and ethnic diversification is expected to continue, driven by younger population

*Minority Share of Population, 1900-2060*



*Minority Share of Population, by Age Group*

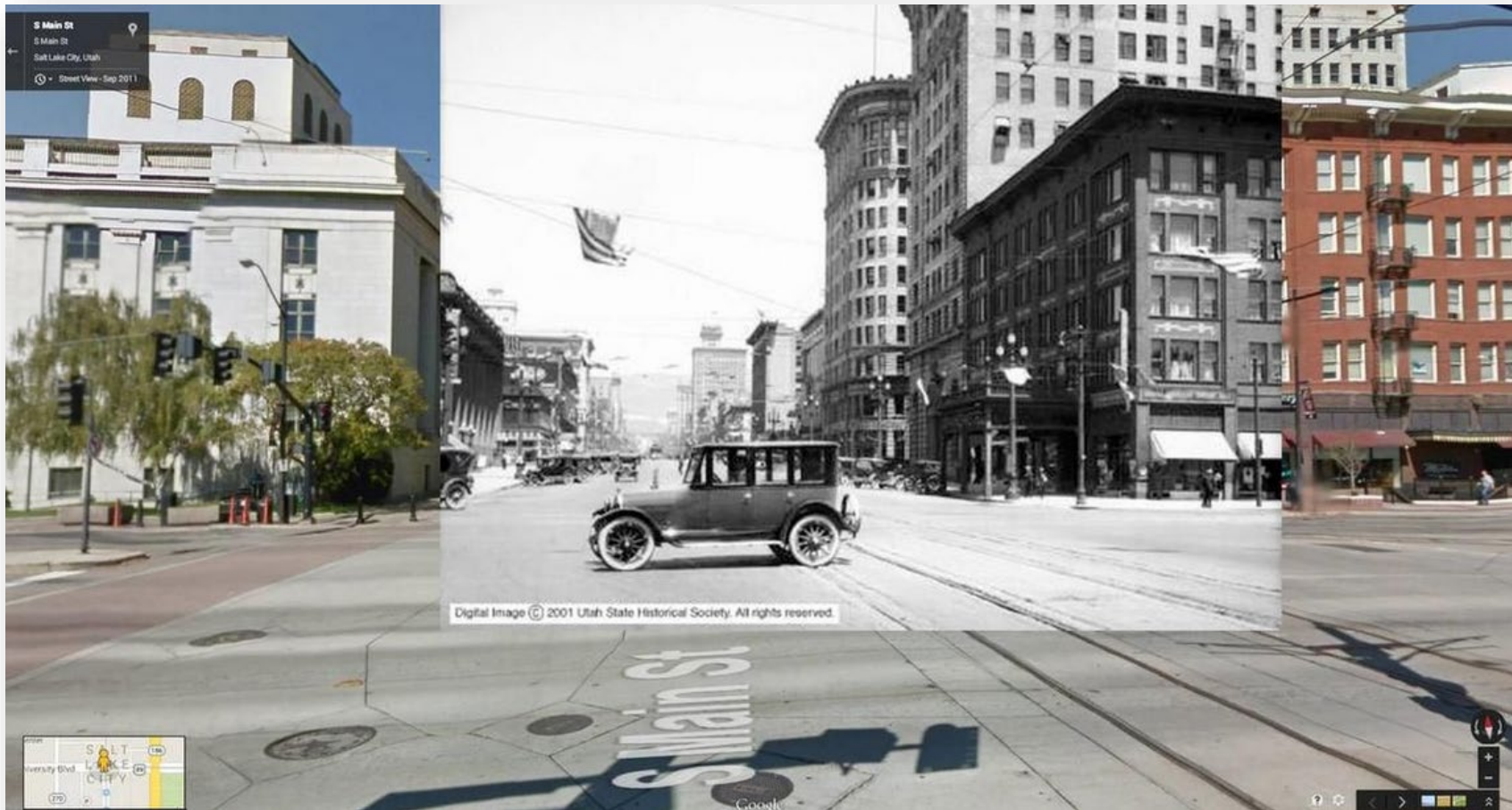


Source: Kem C. Gardner Policy Institute



Source: [KUTV2](#)/Google Maps/Utah State Historical Society





Source: [KUTV2](#)/Google Maps/Utah State Historical Society





Source: Downtown Alliance

# **Kem C. Gardner Policy Institute**

Thomas S. Monson Center | 411 E. South Temple Street  
Salt Lake City, UT 84111 | 801-585-5618 | [gardner.utah.edu](http://gardner.utah.edu)

DAVID ECCLES SCHOOL OF BUSINESS  
UNIVERSITY OF UTAH

[Mallory.bateman@utah.edu](mailto:Mallory.bateman@utah.edu)

801-587-9224